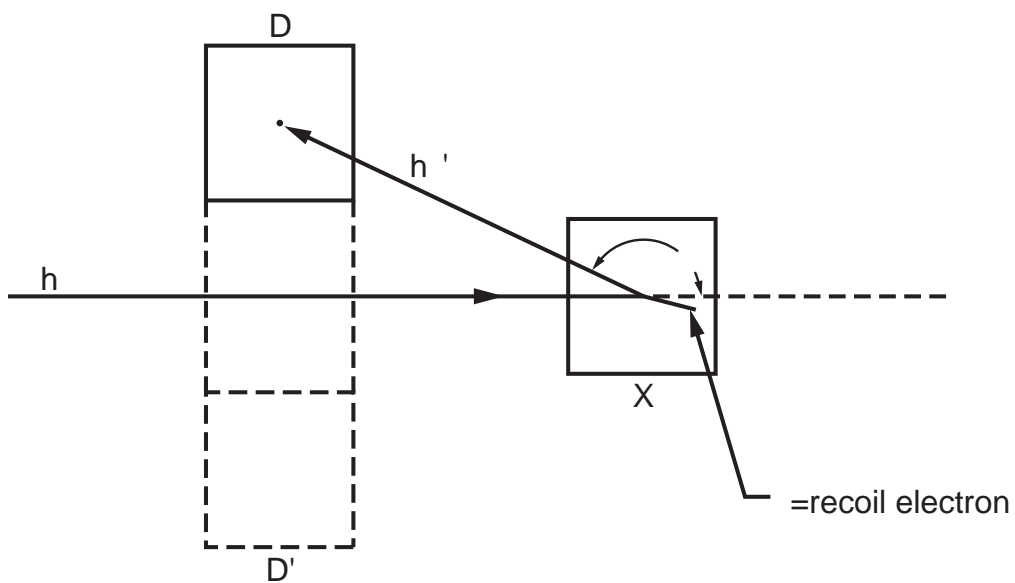
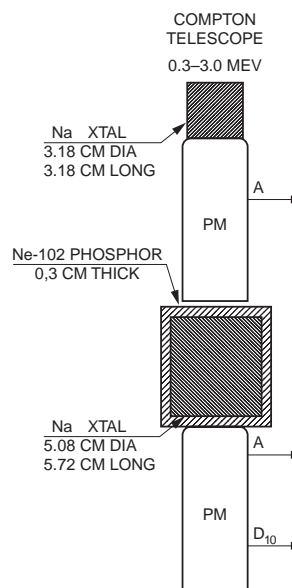


Presently achieved continuum sensitivities

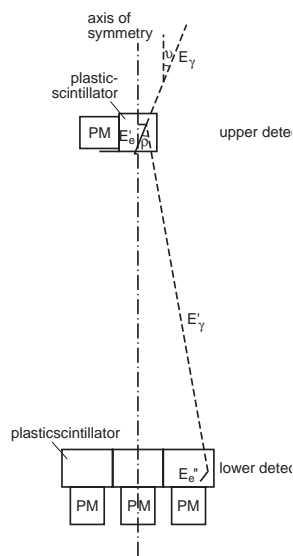
Fig.1



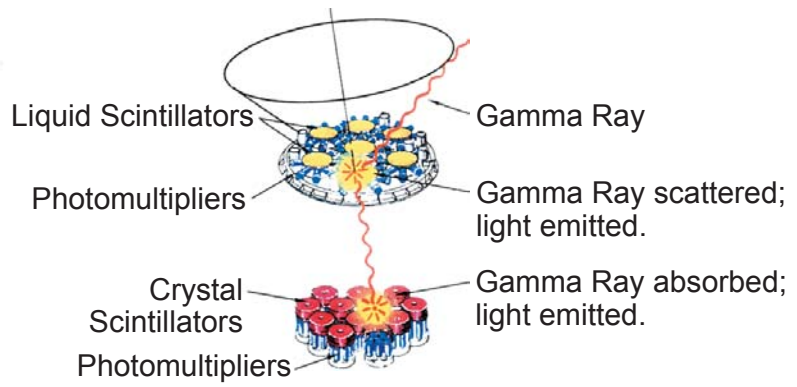
Compton Coincidence Set-Up of Hofstadter & McIntyre
(1950)



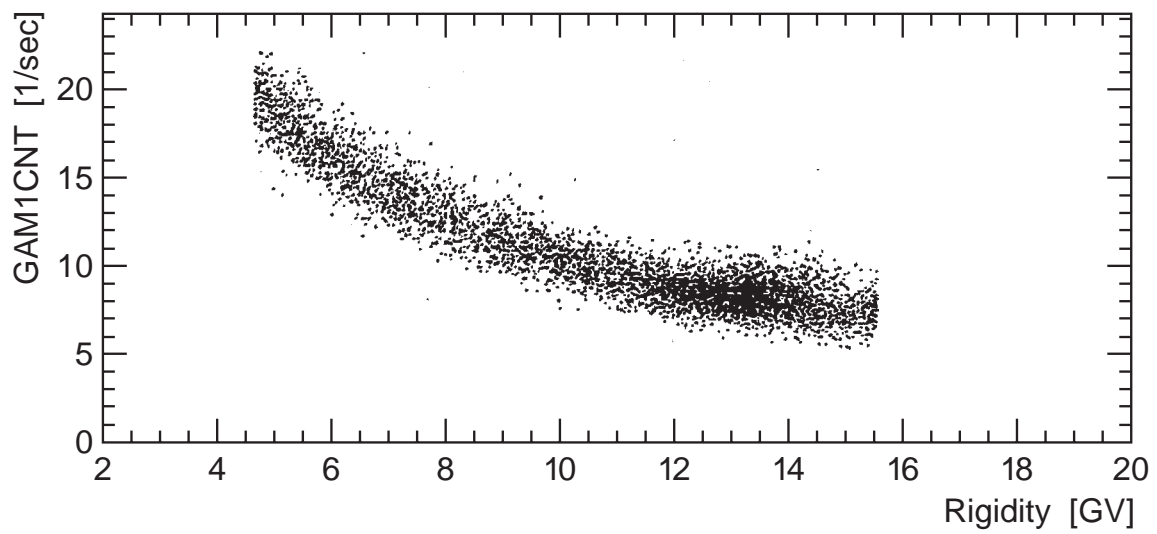
Compton Telescope of Peterson & Howard (1961)



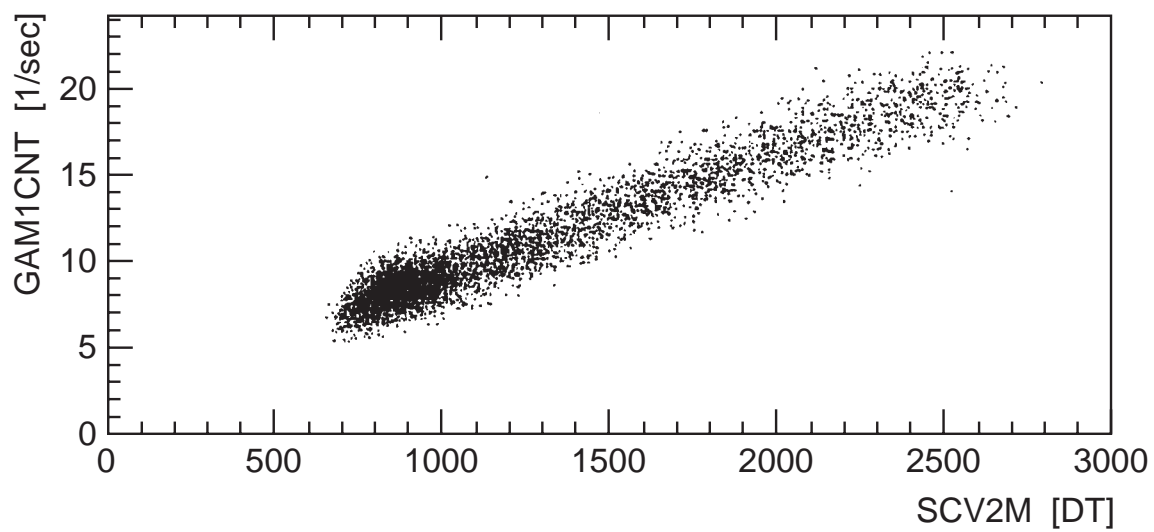
First MPE Compton Telescope of Schönfelder et al, 1973



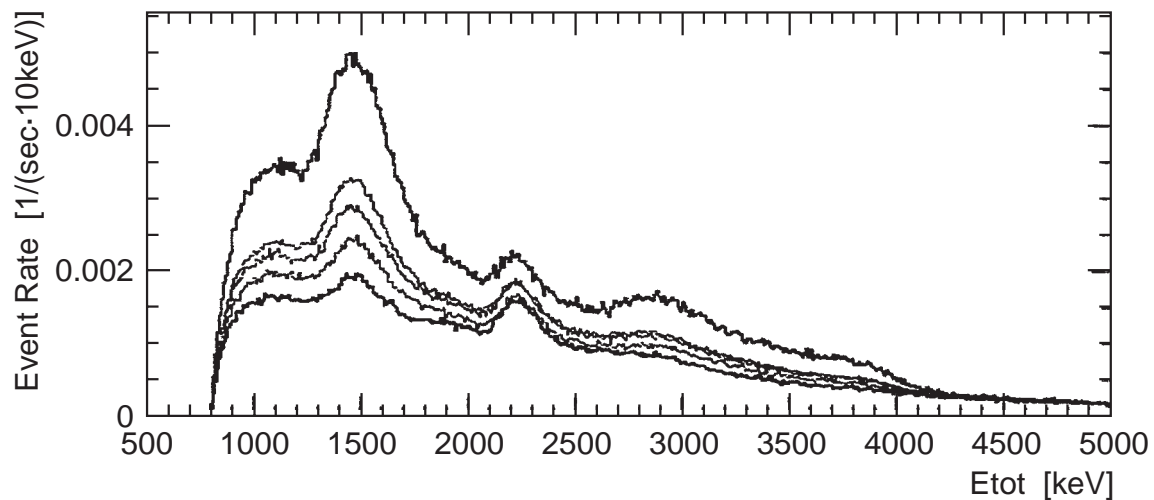
Photomontage and schematic view of COMPTEL



Dependence on the total COMPTEL background rate on the vertical cut-off rigidity



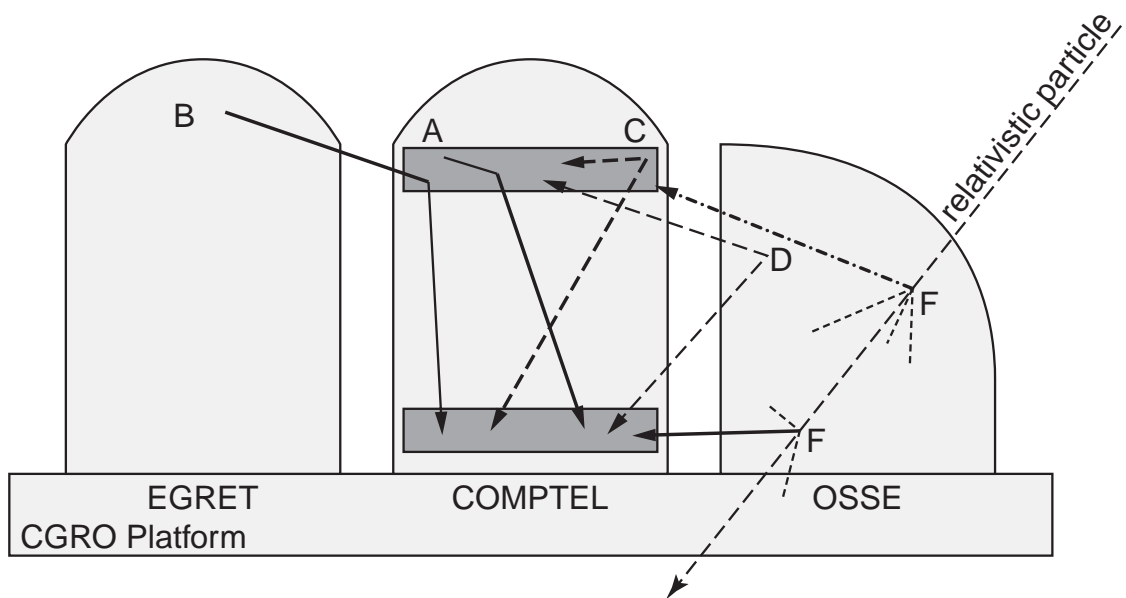
The correlation between the Gamma-1 event rate (GAM1CNT) and the V2 veto rate



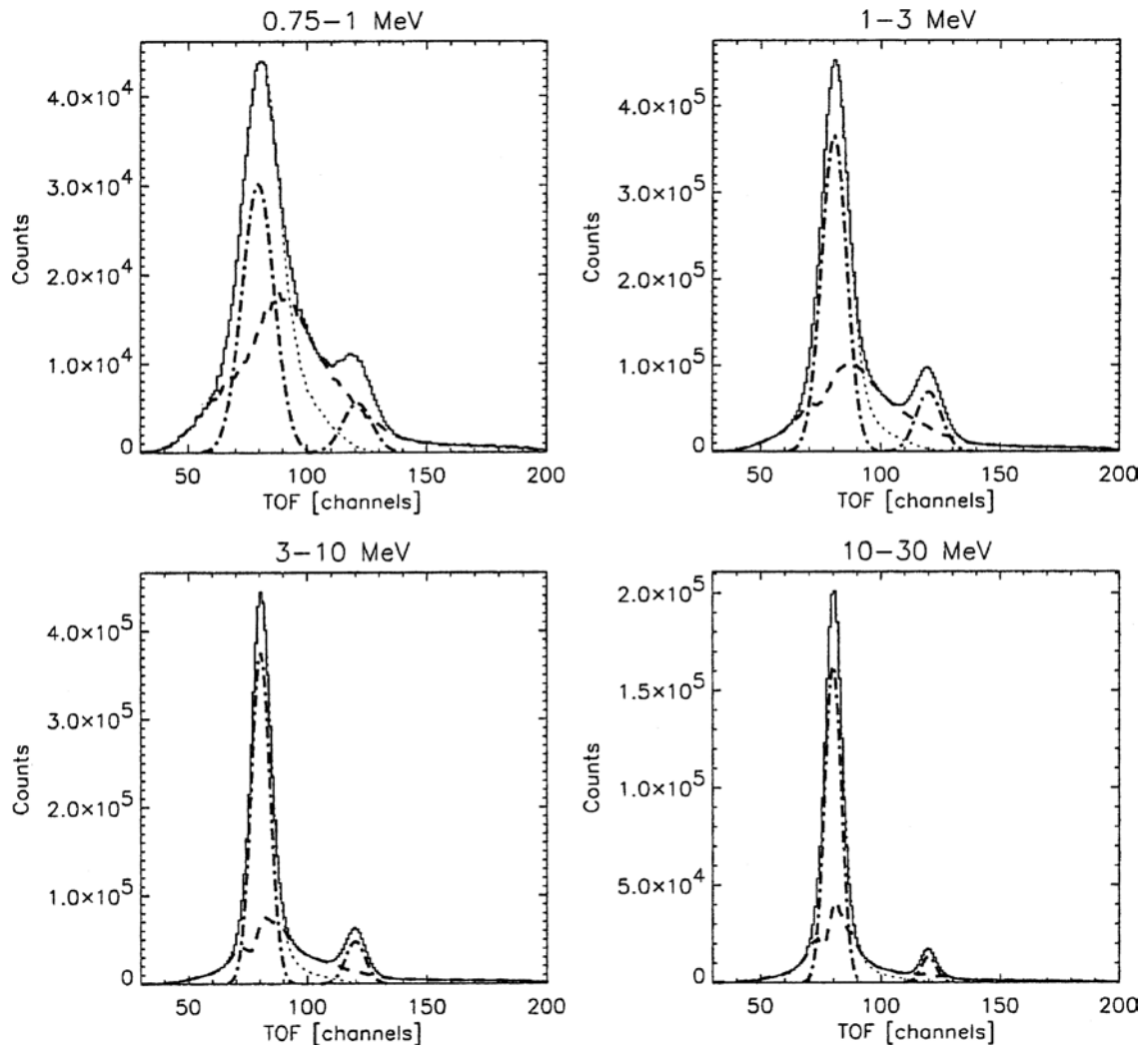
COMPTEL background spectrum measured at different times of the GRO mission:

lowest spectrum: May 1991 to Nov 1993, intermediate spectra taken between November 1993 (time of first re-boost) and May 1997,

highest spectrum: after second re-boost of the observatory to 517 km altitude in May 1997



Production of γ -ray-type events inside and around COMPTTEL



The ToF (see Sec. 3.7) distributions over the full coincidence window in four energy ranges