



PACS Newsletter

Nr. 13, 8 December 2006



The PACS Picture of the Week

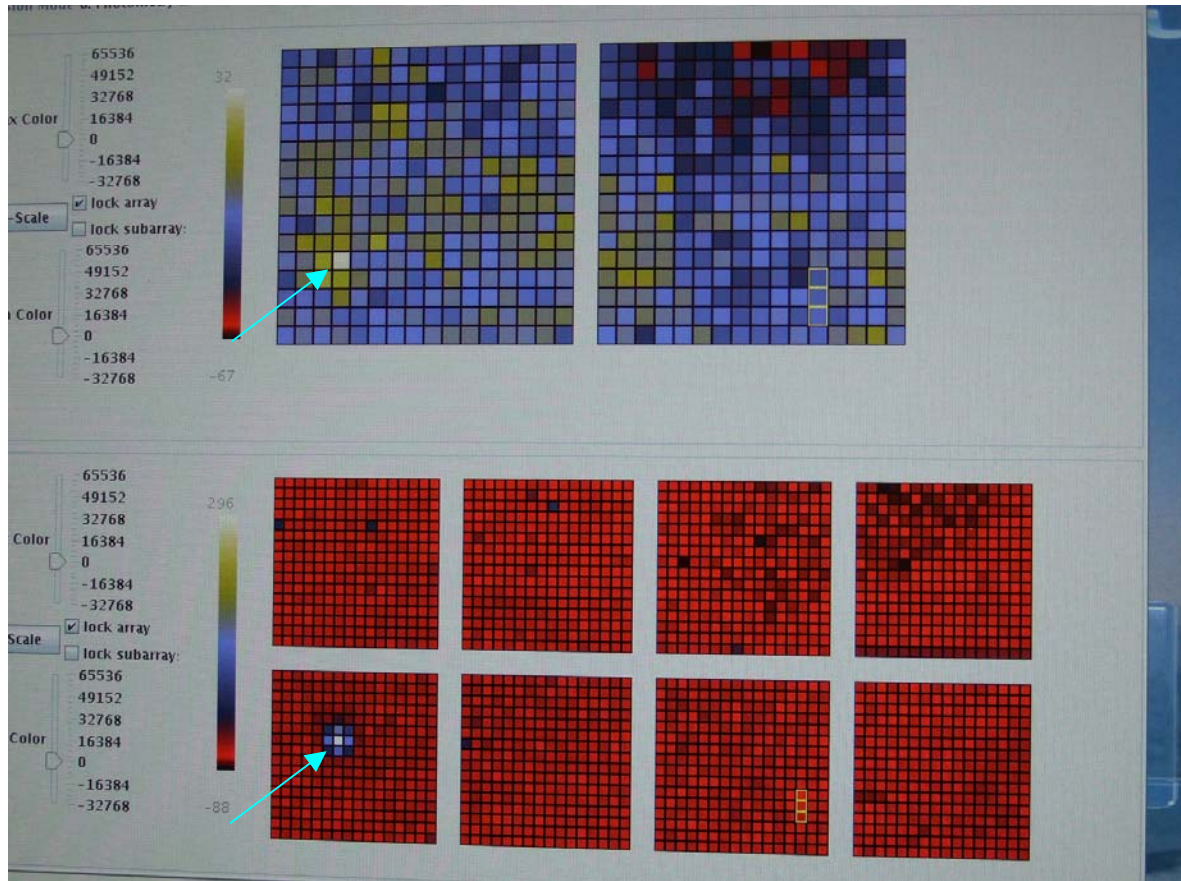


Fig. 1: The image of the hot external blackbody, seen through a 1mm aperture (which corresponds roughly to the size of one red pixel) in the lower left corners of the red (top) and blue (bottom) PACS bolometer arrays. This is a screen shot from the QLA screen (Quick Look Analysis) with a very simple real-time background subtraction.

Status

This week we continued the tests with the photometer in different modes. We had some problems with corrupted telemetry packets and subsequent autonomous switch-offs, which made long test blocks over night a matter of luck. But we hope that recent s/w updates have cured these problems. The highlight of the week were the measurements with the external hot blackbody on the xy-stage. Several images taken with the photometer of hole masks with various diameters are shown in this newsletter. We have performed a number of test sequences to define the optimal focus and central position for the external source for both

spectrometry and photometry, and we are now ready to execute rasters with the point source aperture in order to investigate PSF and image distortion issues.

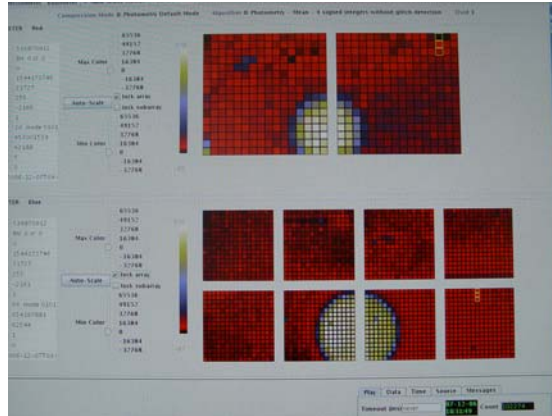


Fig. 2: This was the first (QLA) image of the external source, using the largest aperture size (25mm) as we saw it immediately after our first attempt (well, after someone had realized that it might help to open the shutter in the cryostat...).

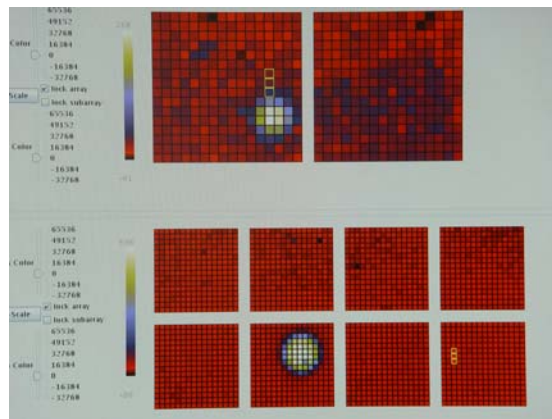


Fig. 3: next we tried the 4mm aperture, at a different position.



Fig. 4: another exhausting test day at the opera¹

¹opera = PACS operations room



Fig. 5: supersonic data analysis (here of the photometric focus test data) is becoming more and more a routine for the ICC.

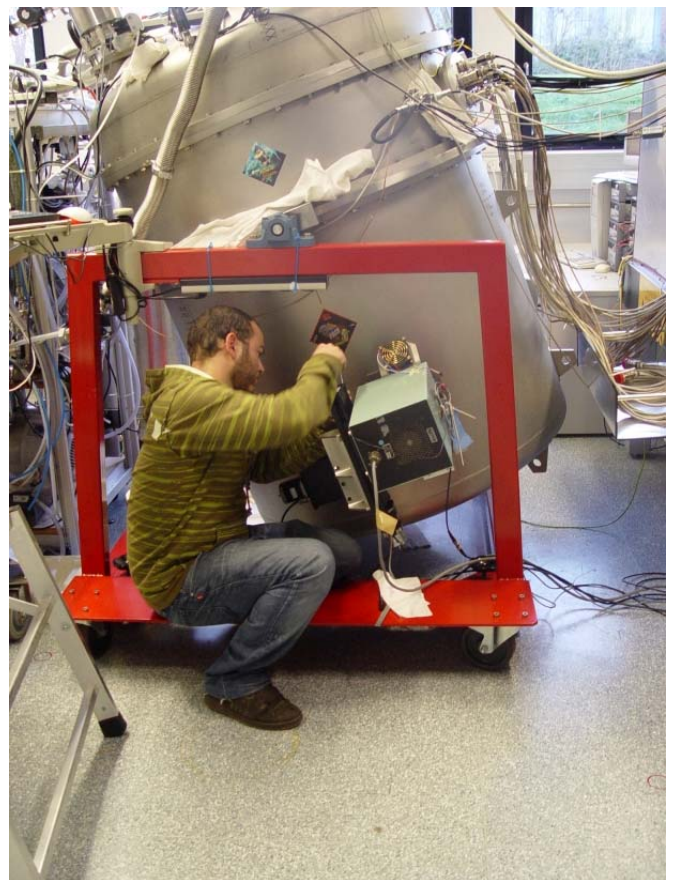
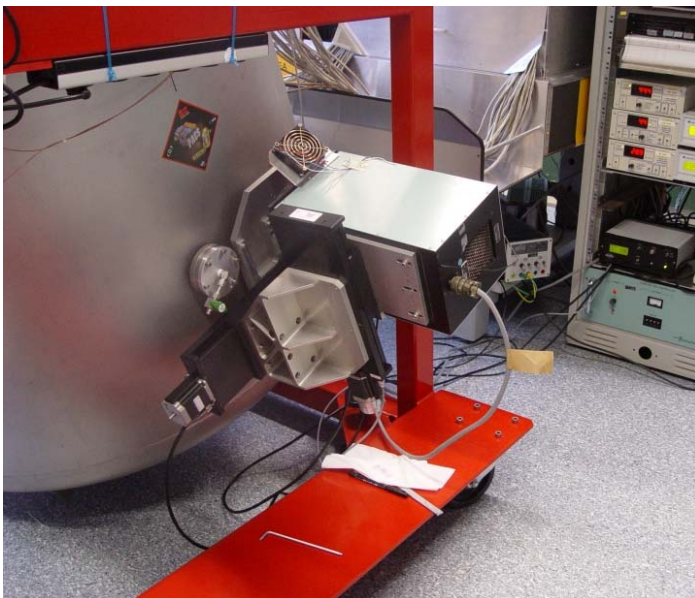


Fig. 6: the xy-stage with the blackbody source mounted in front of the PACS cryostat.

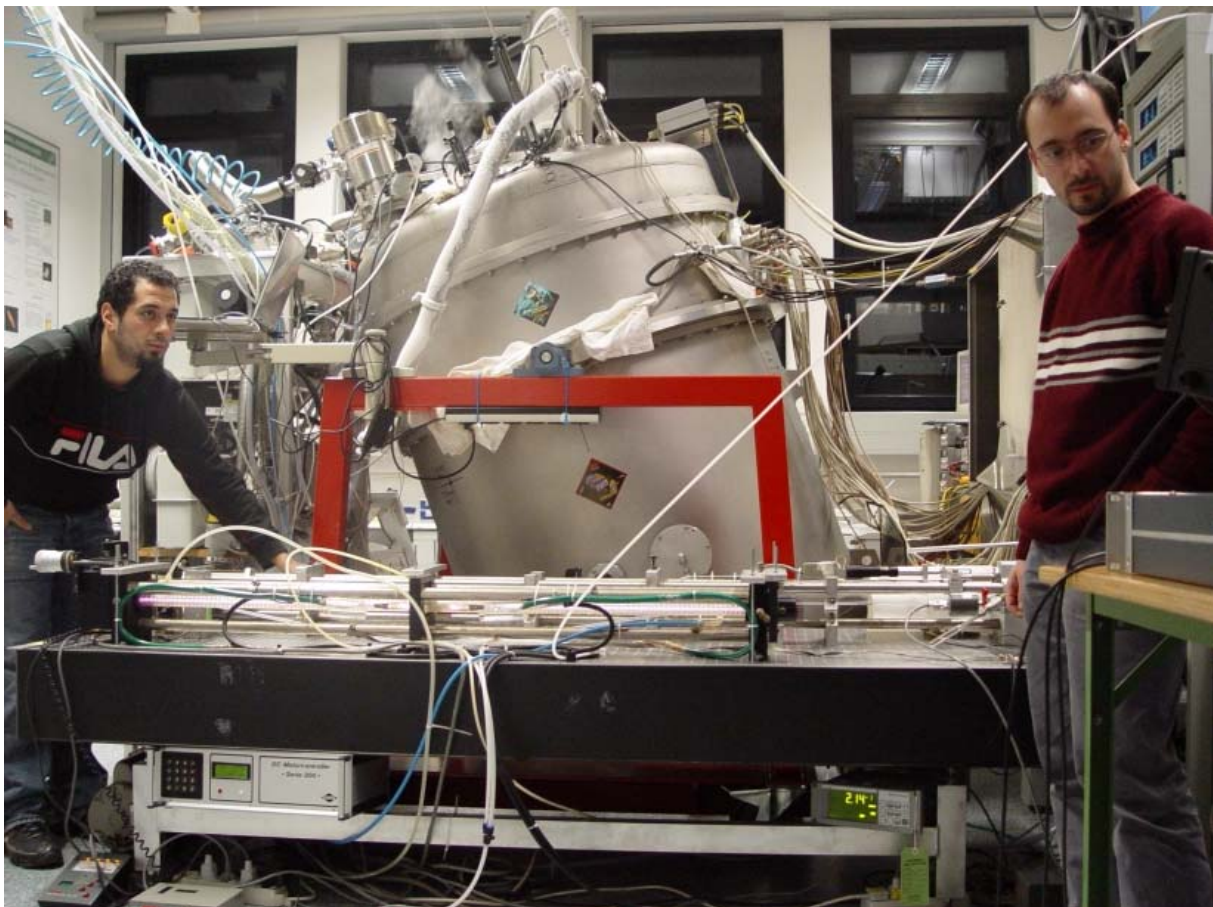
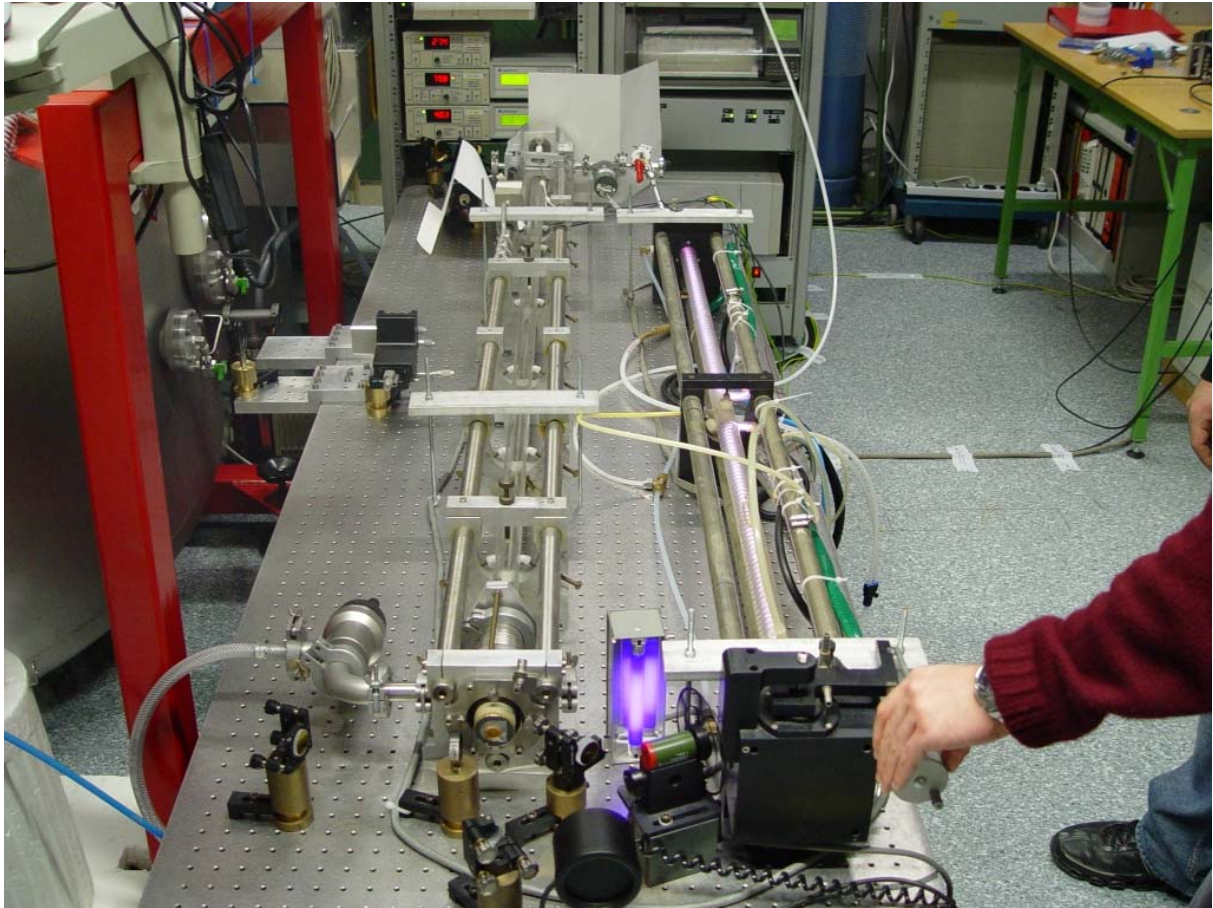


Fig. 7: these two pictures show the LENS Laser in front of the PACS cryostat, the set-up that was used last week for the spectral line measurements (see Newsletter Nr. 12)

And now we proudly present the result of the naming competition for our mascot:
please welcome with me

PACSI,
the polar bear



The PACS Newsletter is edited by:
Dr. Eckhard Sturm (PACS ICC Deputy Manager)
sturm@mpe.mpg.de
Chief Photographer and Photo Editor:
Dr. Albrecht Poglitsch (PACS PI)